

RPS6KA5 (Ab-564) Antibody



PACO23060

Product Information

Size:

100ul

Reactivity:

Human

Source:

Rabbit

Isotype:

IgG

Applications:

ELISA, WB

Recommended dilutions:

ELISA:1:2000-1:10000, WB:1:500-1:3000

Protein Background:**Gene ID:**

RPS6KA5

Uniprot

O75582

Synonyms:

HCP; HCPH; hematopoietic cell phosphatase; Hematopoietic cell protein-tyrosine phosphatase; HPTP1C

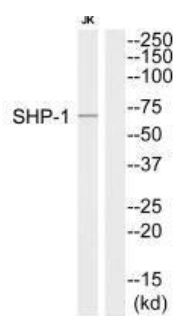
Immunogen:

Synthesized peptide derived from C-terminal of human SHP-1.

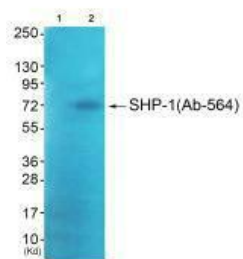
Storage:

Rabbit IgG in phosphate buffered saline (without Mg²⁺ and Ca²⁺), pH 7.4, 150mM NaCl, 0.02% sodium azide and 50% glycerol.

Product Images



Western blot analysis of extracts from Jurkat cells, using SHP-1 (Ab-564) antibody.



Western blot analysis of extracts from JK cells (Lane 2), using SHP-1 (Ab-564) antibody. The lane on the left is treated with synthesized peptide.