

# BRAF (Ab-446) Antibody



PACO23061

---

## Product Information

**Size:**

100ul

**Reactivity:**

Human, Mouse

**Source:**

Rabbit

**Isotype:**

IgG

**Applications:**

ELISA, WB, IHC

**Recommended dilutions:**

ELISA:1:2000-1:10000, WB:1:500-1:3000,  
IHC:1:50-1:100

**Protein Background:**

Protein kinase involved in the transduction of mitogenic signals from the cell membrane to the nucleus. May play a role in the postsynaptic responses of hippocampal neuron. Phosphorylates MAP2K1, and thereby contributes to the MAP kinase signal transduction pathway.

**Gene ID:**

BRAF

**Uniprot**

P15056

**Synonyms:**

B-RAF; B-RAF proto-oncogene serine/threonine-protein kinase; B-Raf proto-oncogene serine/threonine-protein kinase; BRAF; BRAF1

**Immunogen:**

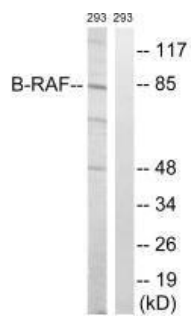
Synthesized non-phosphopeptide derived from human B-RAF around the phosphorylation site of serine 446 (R-D-S(p)-S-D).

**Storage:**

Rabbit IgG in phosphate buffered saline (without Mg<sup>2+</sup> and Ca<sup>2+</sup>), pH 7.4, 150mM NaCl, 0.02% sodium azide and 50% glycerol.

## Product Images

---



Western blot analysis of extracts from 293 cells, treated with insulin (0.01U/ml, 15mins), using B-RAF (Ab-446) antibody.

Immunohistochemistry analysis of paraffin-embedded human breast carcinoma tissue using B-RAF (Ab-446) antibody.

