

MAP3K7 (Ab-271) Antibody



PACO23064

Product Information

Size:

100ul

Reactivity:

Human, Mouse

Source:

Rabbit

Isotype:

IgG

Applications:

ELISA, WB

Recommended dilutions:

ELISA:1:2000-1:10000, WB:1:500-1:3000

Protein Background:**Gene ID:**

MAP3K7

Uniprot

O43318

Synonyms:

EC 2.7.11.25; kinase TAK1; M3K7; MAP3K7; Mitogen-activated protein kinase kinase 7

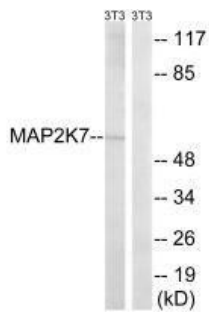
Immunogen:

Synthesized non-phosphopeptide derived from human MAP2K7 around the phosphorylation site of serine 271 (V-D-S(p)-K-A).

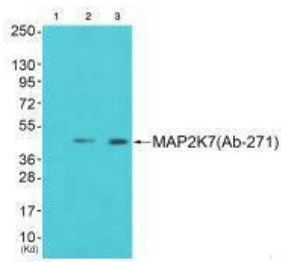
Storage:

Rabbit IgG in phosphate buffered saline (without Mg²⁺ and Ca²⁺), pH 7.4, 150mM NaCl, 0.02% sodium azide and 50% glycerol.

Product Images



Western blot analysis of extracts from HeLa cells, using MAP2K7 (Ab-271) antibody.



Western blot analysis of extracts from 293 cells (Lane 2) and cos-7 cells (Lane 3), using MAP2K7 (Ab-271) antibody. The lane on the left is treated with synthesized peptide.