

RPS6KA5 (Ab-212) Antibody



PACO23065

Product Information

Size:

100ul

Reactivity:

Human

Source:

Rabbit

Isotype:

IgG

Applications:

ELISA, WB, IHC

Recommended dilutions:

ELISA:1:2000-1:10000, WB:1:500-1:3000,
IHC:1:50-1:100

Protein Background:

Gene ID:

RPS6KA5

Uniprot

O75582

Synonyms:

EC 2.7.11.1; Nuclear mitogen- and stress-activated protein kinase 1; 90 kDa ribosomal protein S6 kinase 5; RSK-like protein kinase; RSKL

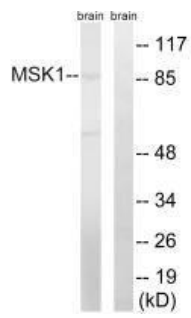
Immunogen:

Synthesized peptide derived from Internal of human MSK1.

Storage:

Rabbit IgG in phosphate buffered saline (without Mg²⁺ and Ca²⁺), pH 7.4, 150mM NaCl, 0.02% sodium azide and 50% glycerol.

Product Images



Western blot analysis of extracts from mouse brain cells, using MSK1 (Ab-212) antibody.

Immunohistochemistry analysis of paraffin-embedded human colon carcinoma tissue, using MSK1 (Ab-212) antibody.

