

STK39 (Ab-311) Antibody



PACO23069

Product Information

Size:

100ul

Reactivity:

Human, Mouse

Source:

Rabbit

Isotype:

IgG

Applications:

ELISA, WB

Recommended dilutions:

ELISA:1:2000-1:10000, WB:1:500-1:3000

Protein Background:

May act as a mediator of stress-activated signals.

Gene ID:

STK39

Uniprot

Q9UEW8

Synonyms:

DCHT; EC 2.7.11.1; Serine/threonine-protein kinase 39; SPAK; Ste-20 related kinase

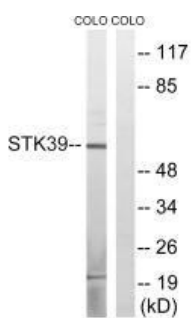
Immunogen:

Synthesized non-phosphopeptide derived from human STK39 around the phosphorylation site of serine 311 (G-K-S(p)-F-R).

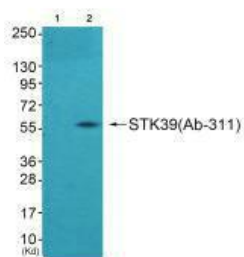
Storage:

Rabbit IgG in phosphate buffered saline (without Mg²⁺ and Ca²⁺), pH 7.4, 150mM NaCl, 0.02% sodium azide and 50% glycerol.

Product Images



Western blot analysis of extracts from COLO cells, using STK39 (Ab-311) antibody.



Western blot analysis of extracts from A549 cells using STK39 (Ab-311) antibody; The lane on the left is treated with synthesized peptide.