

ITCH (Ab-420) Antibody



PACO23072

Product Information

Size:

100ul

Reactivity:

Human, Mouse

Source:

Rabbit

Isotype:

IgG

Applications:

ELISA, WB

Recommended dilutions:

ELISA:1:2000-1:10000, WB:1:500-1:3000

Protein Background:**Gene ID:**

ITCH

Uniprot

Q96J02

Synonyms:

AIF4; AIP4; atrophin-1-interacting protein 4; EC 6.3.2. -; Itchy homolog E3 ubiquitin protein ligase

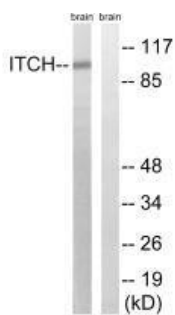
Immunogen:

Synthesized non-phosphopeptide derived from human ITCH around the phosphorylation site of tyrosine 420 (F-I-Y(p)-G-N).

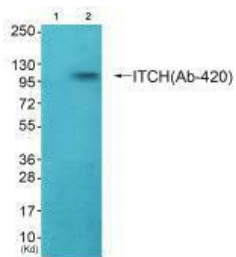
Storage:

Rabbit IgG in phosphate buffered saline (without Mg²⁺ and Ca²⁺), pH 7.4, 150mM NaCl, 0.02% sodium azide and 50% glycerol.

Product Images



Western blot analysis of extracts from mouse brain cells, using ITCH (Ab-420) antibody.



Western blot analysis of extracts from HepG2 cells (Lane 2), using ITCH (Ab-420) antibody. The lane on the left is treated with synthesized peptide.