

ANXA1 (Ab-21) Antibody



PACO23076

Product Information

Size:

100ul

Reactivity:

Human

Source:

Rabbit

Isotype:

IgG

Applications:

ELISA, WB

Recommended dilutions:

ELISA:1:2000-1:10000, WB:1:500-1:3000

Protein Background:

Calcium/phospholipid-binding protein which promotes membrane fusion and is involved in exocytosis. This protein regulates phospholipase A2 activity. It seems to bind from two to four calcium ions with high affinity.

Gene ID:

ANXA1

Uniprot

P04083

Synonyms:

annexin A1; Annexin I; ANX1; Calpactin II; Chromobindin 9

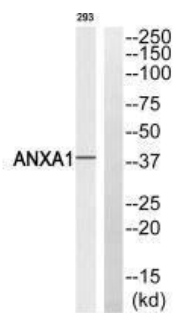
Immunogen:

Synthesized non-phosphopeptide derived from human ANXA1 around the phosphorylation site of tyrosine 21 (Q-E-Y(p)-V-Q).

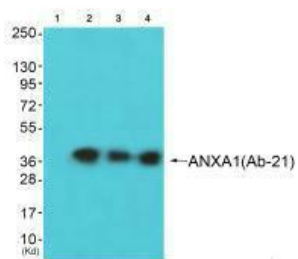
Storage:

Rabbit IgG in phosphate buffered saline (without Mg²⁺ and Ca²⁺), pH 7.4, 150mM NaCl, 0.02% sodium azide and 50% glycerol.

Product Images



Western blot analysis of extracts from 293 cells, using ANXA1 (Ab-21) antibody.



Western blot analysis of extracts from JK cells (Lane 2), K562 cells (Lane 3) and 293 cells (Lane 4), using ANXA1 (Ab-21) antibody. The lane on the left is treated with synthesized peptide.