

MAPKAPK2 (Ab-272) Antibody



PACO23080

Product Information

Size:

100ul

Reactivity:

Human, Mouse

Source:

Rabbit

Isotype:

IgG

Applications:

ELISA, WB, IHC

Recommended dilutions:

ELISA:1:2000-1:10000, WB:1:500-1:3000,
IHC:1:50-1:100

Protein Background:**Gene ID:**

MAPKAPK2

Uniprot

P49137

Synonyms:

EC 2.7.11.1; kinase MAPKAPK2; MAP kinase-activated protein kinase 2; MAPK-activated protein kinase 2; MAPK2

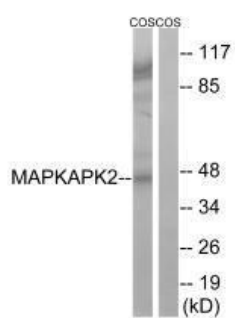
Immunogen:

Synthesized non-phosphopeptide derived from human MAPKAPK2 around the phosphorylation site of serine 272 (A-I-S(p)-P-G).

Storage:

Rabbit IgG in phosphate buffered saline (without Mg²⁺ and Ca²⁺), pH 7.4, 150mM NaCl, 0.02% sodium azide and 50% glycerol.

Product Images



Western blot analysis of extracts from COS cells, using MAPKAPK2 (Ab-272) antibody.

Immunohistochemistry analysis of paraffin-embedded human breast carcinoma tissue using MAPKAPK2 (Ab-272) antibody.

