

# MEF2C (Ab-396) Antibody



PACO23081

---

## Product Information

**Size:**

100ul

**Reactivity:**

Human, Mouse

**Source:**

Rabbit

**Isotype:**

IgG

**Applications:**

ELISA, WB

**Recommended dilutions:**

ELISA:1:2000-1:10000, WB:1:500-1:3000

**Protein Background:****Gene ID:**

MEF2C

**Uniprot**

Q06413

**Synonyms:**

Myocyte enhancer factor 2C; Myocyte-specific enhancer factor 2C; Similar to MADS box transcription enhancer factor 2 polypeptide C;

**Immunogen:**

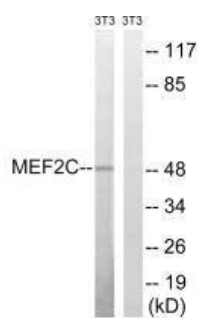
Synthesized non-phosphopeptide derived from human MEF2C around the phosphorylation site of serine 396 (P-V-S(p)-P-P).

**Storage:**

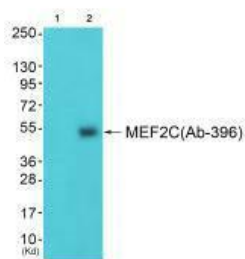
Rabbit IgG in phosphate buffered saline (without Mg<sup>2+</sup> and Ca<sup>2+</sup>), pH 7.4, 150mM NaCl, 0.02% sodium azide and 50% glycerol.

## Product Images

---



Western blot analysis of extracts from 3T3 cells, treated with starved (24 hours), using MEF2C (Ab-396) antibody.



Western blot analysis of extracts from 3T3 cells (Lane 2), using MEF2C (Ab-396) antibody. The lane on the left is treated with synthesized peptide.