

NUDC (Ab-326) Antibody



PACO23083

Product Information

Size:

100ul

Reactivity:

Human, Mouse

Source:

Rabbit

Isotype:

IgG

Applications:

ELISA, WB

Recommended dilutions:

ELISA:1:2000-1:10000, WB:1:500-1:3000

Protein Background:

Gene ID:

NUDC

Uniprot

Q9Y266

Synonyms:

MNUDC protein; Nuclear distribution gene C (A. nidulans) homolog; SIG-92;

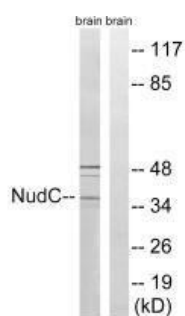
Immunogen:

Synthesized non-phosphopeptide derived from human NudC around the phosphorylation site of serine 326 (D-F-S(p)-K-A).

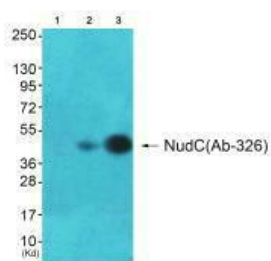
Storage:

Rabbit IgG in phosphate buffered saline (without Mg²⁺ and Ca²⁺), pH 7.4, 150mM NaCl, 0.02% sodium azide and 50% glycerol.

Product Images



Western blot analysis of extracts from rat brain cells, using NudC (Ab-326) antibody.



Western blot analysis of extracts from A549 cells and HepG2(Lane 3) cells, using NudC (Ab-326) antibody. The lane on the left is treated with synthesized peptide.