

NCF1 (Ab-345) Antibody



PACO23084

Product Information

Size:

100ul

Reactivity:

Human

Source:

Rabbit

Isotype:

IgG

Applications:

ELISA, WB, IHC

Recommended dilutions:

ELISA:1:2000-1:10000, WB:1:500-1:3000,
IHC:1:50-1:100

Protein Background:

NCF2, NCF1, and a membrane bound cytochrome b558 are required for activation of the latent NADPH oxidase (necessary for superoxide production).

Gene ID:

NCF1

Uniprot

P14598

Synonyms:

47 kDa autosomal chronic granulomatous disease protein; 47 kDa neutrophil oxidase factor; NCF-1; NCF-47K; NCF1

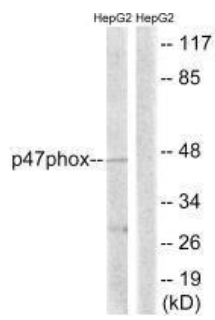
Immunogen:

Synthesized non-phosphopeptide derived from human p47 phox around the phosphorylation site of serine 345 (P-Q-S(p)-P-G).

Storage:

Rabbit IgG in phosphate buffered saline (without Mg²⁺ and Ca²⁺), pH 7.4, 150mM NaCl, 0.02% sodium azide and 50% glycerol.

Product Images



Western blot analysis of extracts from HepG2 cells, treated with TNF (20ng/ml, 5mins), using p47 phox (Ab-345) antibody.

Immunohistochemistry analysis of paraffin-embedded human brain tissue using p47 phox (Ab-345) antibody.

