

# MAPK1/MAPK3 (Ab-205/222) Antibody



PACO23087

---

## Product Information

**Size:**

100ul

**Reactivity:**

Human, Mouse, Rat

**Source:**

Rabbit

**Isotype:**

IgG

**Applications:**

ELISA, WB

**Recommended dilutions:**

ELISA:1:2000-1:10000, WB:1:500-1:3000

**Protein Background:****Gene ID:**

MAPK1/MAPK3

**Uniprot**

P28482/P27361

**Synonyms:**

ERK; ERK-2; ERK2; ERT1; Extracellular signal-regulated kinase 2

**Immunogen:**

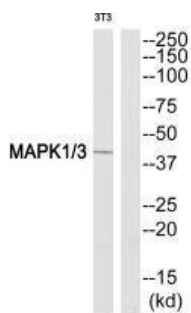
Synthesized peptide derived from Internal of human MAPK1.

**Storage:**

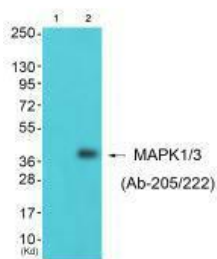
Rabbit IgG in phosphate buffered saline (without Mg<sup>2+</sup> and Ca<sup>2+</sup>), pH 7.4, 150mM NaCl, 0.02% sodium azide and 50% glycerol.

## Product Images

---



Western blot analysis of extracts from NIH-3T3 cells, using MAPK1/3 (Ab-205/222) antibody.



Western blot analysis of extracts from K562 cells (Lane 2), using MAPK1/3 (Ab-205/222) antibody. The lane on the left is treated with synthesized peptide.