

EIF2S2 (Ab-67) Antibody



PACO23089

Product Information

Size:

100ul

Reactivity:

Human, Mouse

Source:

Rabbit

Isotype:

IgG

Applications:

ELISA, WB

Recommended dilutions:

ELISA:1:2000-1:10000, WB:1:500-1:3000

Protein Background:

eIF-2 functions in the early steps of protein synthesis by forming a ternary complex with GTP and initiator tRNA. This complex binds to a 40S ribosomal subunit, followed by mRNA binding to form a 43S preinitiation complex. Junction of the 60S ribosomal subunit to form the 80S initiation complex is preceded by hydrolysis of the GTP bound to eIF-2 and release of an eIF-2-GDP binary complex. In order for eIF-2 to recycle and catalyze another round of initiation, the GDP bound to eIF-2 must exchange with GTP by way of a reaction catalyzed by eIF-2B.

Gene ID:

EIF2S2

Uniprot

P20042

Synonyms:

DKFZp686L18198; eIF-2-beta; EIF2; EIF2B; EIF2beta

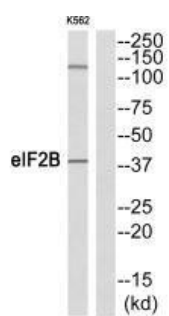
Immunogen:

Synthesized peptide derived from N-terminal of human eIF2B.

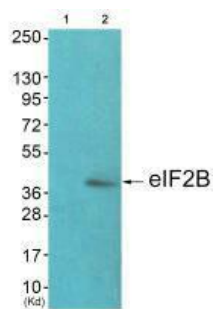
Storage:

Rabbit IgG in phosphate buffered saline (without Mg²⁺ and Ca²⁺), pH 7.4, 150mM NaCl, 0.02% sodium azide and 50% glycerol.

Product Images



Western blot analysis of extracts from K562 cells, using eIF2B (Ab-67) antibody.



Western blot analysis of extracts from JK cells (Lane 2), using eIF2B (Ab-67) antibody. The lane on the left is treated with synthesized peptide.