

Product Information

Size:

100ul

Reactivity:

Human, Mouse

Source:

Rabbit

Isotype:

IgG

Applications:

ELISA, WB

Recommended dilutions:

ELISA:1:2000-1:10000, WB:1:500-1:3000

Protein Background:

Key calcium ion sensor involved in the Ca²⁺-triggered synaptic vesicle-plasma membrane fusion. Plays a role in the sarcolemma repair mechanism of both skeletal muscle and cardiomyocytes that permits rapid resealing of membranes disrupted by mechanical stress By similarity.

Gene ID:

DYSF

Uniprot

O75923

Synonyms:

dysferlin; limb girdle muscular dystrophy 2B (autosomal recessive);

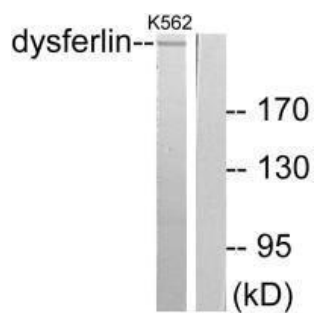
Immunogen:

Synthesized peptide derived from human Dysferlin.

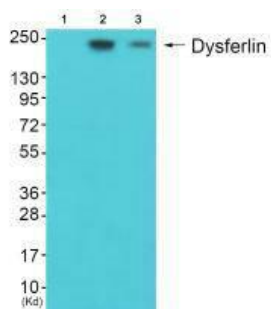
Storage:

Rabbit IgG in phosphate buffered saline (without Mg²⁺ and Ca²⁺), pH 7.4, 150mM NaCl, 0.02% sodium azide and 50% glycerol.

Product Images



Western blot analysis of extracts from K562 cells, using Dysferlin antibody.



Western blot analysis of extracts from JK cells (Lane 2) and K562 cells (Lane 3), using Dysferlin antibody. The lane on the left is treated with synthesized peptide.