

### Product Information

**Size:**

100ul

**Reactivity:**

Human, Mouse, Rat

**Source:**

Rabbit

**Isotype:**

IgG

**Applications:**

ELISA, WB, IHC

**Recommended dilutions:**

ELISA:1:2000-1:10000, WB:1:500-1:3000,  
IHC:1:50-1:100

**Protein Background:**

Seems to specifically activate progelatinase A. May thus trigger invasion by tumor cells by activating progelatinase A on the tumor cell surface. May be involved in actin cytoskeleton reorganization by cleaving PTK7. Acts as a positive regulator of cell growth and migration via activation of MMP15. Involved in the formation of the fibrovascular tissues in association with pro-MMP2.

**Gene ID:**

MMP14

**Uniprot**

P50281

**Synonyms:**

MT1-MMP; MATRIX METALLOPROTEINASE 14; MEMBRANE-TYPE; MEMBRANE-TYPE MATRIX METALLOPROTEINASE 1; matrix metalloproteinase 14 (membrane-inserted).

**Immunogen:**

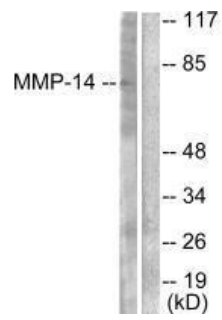
Synthesized peptide derived from human MMP-14.

**Storage:**

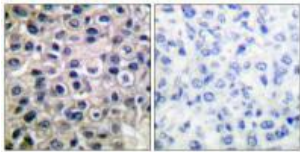
Rabbit IgG in phosphate buffered saline (without Mg<sup>2+</sup> and Ca<sup>2+</sup>), pH 7.4, 150mM NaCl, 0.02% sodium azide and 50% glycerol.

## Product Images

---



Western blot analysis of extracts from NIH/3T3 cells, using MMP-14 antibody.



Immunohistochemical analysis of paraffin-embedded human breast carcinoma tissue using MMP-14 antibody.