

MMP9 Antibody



PACO23126

Product Information

Size:

100ul

Reactivity:

Human

Source:

Rabbit

Isotype:

IgG

Applications:

ELISA, WB, IHC

Recommended dilutions:

ELISA:1:2000-1:10000, WB:1:500-1:3000,
IHC:1:50-1:100

Protein Background:

May play an essential role in local proteolysis of the extracellular matrix and in leukocyte migration. Could play a role in bone osteoclastic resorption. Cleaves KiSS1 at a Gly-|-Leu bond. Cleaves type IV and type V collagen into large C-terminal three quarter fragments and shorter N-terminal one quarter fragments. Degrades fibronectin but not laminin or Pz-peptide.

Gene ID:

MMP9

Uniprot

P14780

Synonyms:

92 kDa gelatinase; 92 kDa type IV collagenase precursor; CLG4B; GELB; Gelatinase B

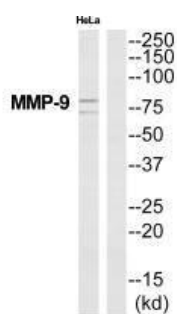
Immunogen:

Synthesized peptide derived from human MMP-9.

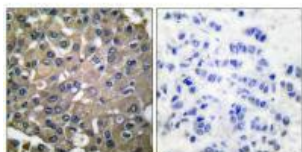
Storage:

Rabbit IgG in phosphate buffered saline (without Mg²⁺ and Ca²⁺), pH 7.4, 150mM NaCl, 0.02% sodium azide and 50% glycerol.

Product Images



Western blot analysis of extracts from HeLa cells, using MMP-9 antibody.



Immunohistochemical analysis of paraffin-embedded human breast carcinoma tissue using MMP-9 antibody.