

PACO23128

---

## Product Information

**Size:**

100ul

**Reactivity:**

Human, Mouse, Rat

**Source:**

Rabbit

**Isotype:**

IgG

**Applications:**

ELISA, WB, IHC

**Recommended dilutions:**

ELISA:1:2000-1:10000, WB:1:500-1:3000,  
IHC:1:50-1:100

**Protein Background:**

Interacts strongly with CDK6, weakly with CDK4. Inhibits cell growth and proliferation with a correlated dependence on endogenous retinoblastoma protein RB.

**Gene ID:**

CDKN2C

**Uniprot**

P42773

**Synonyms:**

OTTHUMP00000046546; p18(INK4C); p18-INK4C; CDK6 inhibitor p18; cyclin-dependent inhibitor

**Immunogen:**

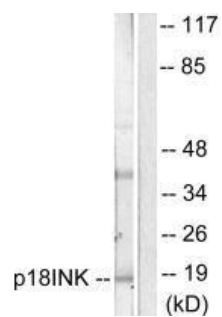
Synthesized peptide derived from human p18 INK antibody.

**Storage:**

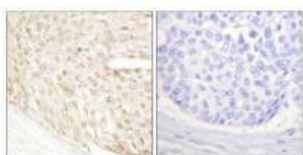
Rabbit IgG in phosphate buffered saline (without Mg<sup>2+</sup> and Ca<sup>2+</sup>), pH 7.4, 150mM NaCl, 0.02% sodium azide and 50% glycerol.

## Product Images

---



Western blot analysis of extracts from COS7 cells, using p18 INK antibody.



Immunohistochemical analysis of paraffin-embedded human breast carcinoma tissue using p18 INK antibody.