

Product Information

Size:

100ul

Reactivity:

Human, Mouse, Rat

Source:

Rabbit

Isotype:

IgG

Applications:

ELISA, WB

Recommended dilutions:

ELISA:1:2000-1:10000, WB:1:500-1:3000

Protein Background:

Modulates cytoplasmic dynein binding to an organelle, and plays a role in prometaphase chromosome alignment and spindle organization during mitosis. Involved in anchoring microtubules to centrosomes. May play a role in synapse formation during brain development.

Gene ID:

DCTN2

Uniprot

Q13561

Synonyms:

50 kDa dynein-associated polypeptide; DCT2; DCTN-50; DCTN2; dynactin complex 50 kDa subunit

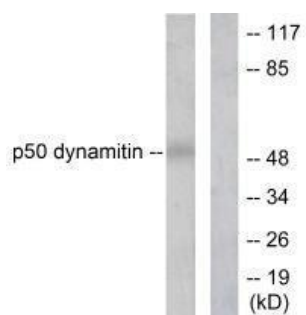
Immunogen:

Synthesized peptide derived from human p50 dynamitin.

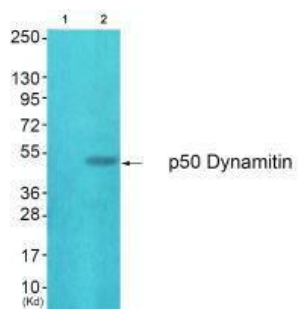
Storage:

Rabbit IgG in phosphate buffered saline (without Mg²⁺ and Ca²⁺), pH 7.4, 150mM NaCl, 0.02% sodium azide and 50% glycerol.

Product Images



Western blot analysis of extracts from A549 cells, using p50 dynamitin antibody.



Western blot analysis of extracts from HuvEc cells (Lane 2), using p50 Dynamitin antibody. The lane on the left is treated with synthesized peptide.