

PACO23134

---

## Product Information

**Size:**

100ul

**Reactivity:**

Human, Mouse, Rat

**Source:**

Rabbit

**Isotype:**

IgG

**Applications:**

ELISA, WB, IHC

**Recommended dilutions:**

ELISA:1:2000-1:10000, WB:1:500-1:3000,  
IHC:1:50-1:100

**Protein Background:**

Ras proteins bind GDP/GTP and possess intrinsic GTPase activity.

**Gene ID:**

NRAS/HRAS/KRAS

**Uniprot**

P01111/P01112/P01116

**Synonyms:**

GTPase NRas; Transforming protein N-Ras; NRAS; HRAS1; GTPase HRas

**Immunogen:**

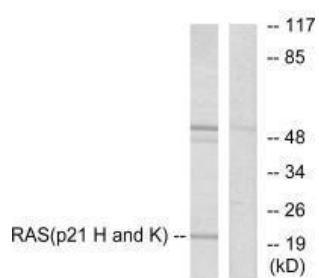
Synthesized peptide derived from human RASH/RASK/RASN antibody.

**Storage:**

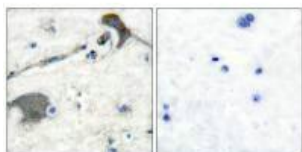
Rabbit IgG in phosphate buffered saline (without Mg<sup>2+</sup> and Ca<sup>2+</sup>), pH 7.4, 150mM NaCl, 0.02% sodium azide and 50% glycerol.

## Product Images

---



Western blot analysis of extracts from HeLa cells, using RASH/RASK/RASN antibody.



Immunohistochemical analysis of paraffin-embedded human brain tissue using RASH/RASK/RASN antibody.