
Product Information

Size:

100ul

Reactivity:

Human

Source:

Rabbit

Isotype:

IgG

Applications:

ELISA, WB, IHC

Recommended dilutions:

ELISA:1:2000-1:10000, WB:1:500-1:3000,
IHC:1:50-1:100

Protein Background:

The heterodimer acts as a E1 ligase for SUMO1, SUMO2, SUMO3, and probably SUMO4. It mediates ATP-dependent activation of SUMO proteins followed by formation of a thioester bond between a SUMO protein and a conserved active site cysteine residue on UBA2/SAE2.

Gene ID:

UBA2

Uniprot

Q9UBT2

Synonyms:

ANTHRACYCLINE-associated resistance ARX; ARX; EC 6.3.2. -; SUMO-1 activating enzyme subunit 2; UBA2

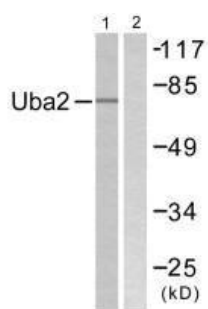
Immunogen:

Synthesized peptide derived from C-terminal of human Uba2.

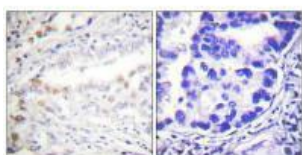
Storage:

Rabbit IgG in phosphate buffered saline (without Mg²⁺ and Ca²⁺), pH 7.4, 150mM NaCl, 0.02% sodium azide and 50% glycerol.

Product Images



Western blot analysis of extracts from 293 cells, treated with UV (5mins), using Uba2 antibody.



Immunohistochemistry analysis of paraffin-embedded human lung carcinoma tissue using Uba2 antibody.