

# XRCC6 Antibody



PACO23159

---

## Product Information

**Size:**

100ul

**Reactivity:**

Human, Mouse

**Source:**

Rabbit

**Isotype:**

IgG

**Applications:**

ELISA, WB, IHC

**Recommended dilutions:**

ELISA:1:2000-1:10000, WB:1:500-1:3000,  
IHC:1:50-1:100

**Protein Background:****Gene ID:**

XRCC6

**Uniprot**

P12956

**Synonyms:**

70 kDa subunit of Ku antigen; ATP-dependent DNA helicase II; 70 kDa subunit; CTC box binding factor 75 kDa subunit; CTC75

**Immunogen:**

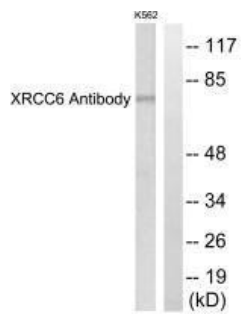
Synthesized peptide derived from C-terminal of human XRCC6.

**Storage:**

Rabbit IgG in phosphate buffered saline (without Mg<sup>2+</sup> and Ca<sup>2+</sup>), pH 7.4, 150mM NaCl, 0.02% sodium azide and 50% glycerol.

## Product Images

---



Western blot analysis of extracts from K562 cells, using XRCC6 antibody.

Immunohistochemistry analysis of paraffin-embedded human breast carcinoma tissue using XRCC6 antibody.

