

NKX6-3 Antibody



PACO23160

Product Information

Size:

100ul

Reactivity:

Human, Mouse

Source:

Rabbit

Isotype:

IgG

Applications:

ELISA, WB, IF

Recommended dilutions:

ELISA:1:2000-1:10000, WB:1:500-1:3000,
IF:1:100-1:500

Protein Background:

Putative transcription factor, which may be involved in patterning of central nervous system and pancreas By similarity.

Gene ID:

NKX6-3

Uniprot

A6NJ46

Synonyms:

NKX63; Homeobox protein Nkx-6.3; NKX6-3;

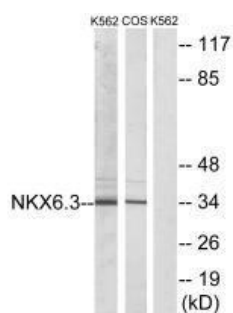
Immunogen:

Synthesized peptide derived from internal of human NKX6.

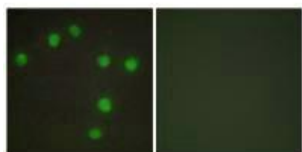
Storage:

Rabbit IgG in phosphate buffered saline (without Mg²⁺ and Ca²⁺), pH 7.4, 150mM NaCl, 0.02% sodium azide and 50% glycerol.

Product Images



Western blot analysis of extracts from K562 cells and COS-7 cells, using NKX6.3 antibody.



Immunofluorescence analysis of HUVEC cells, using NKX6.3 antibody.