

PACO23168

Product Information

Size:

100ul

Reactivity:

Human

Source:

Rabbit

Isotype:

IgG

Applications:

ELISA, WB, IF

Recommended dilutions:

ELISA:1:2000-1:10000, WB:1:500-1:3000,
IF:1:100-1:500

Protein Background:

Probable transcriptional regulator involved in developmental processes. Is required for normal development of the pharyngeal arch arteries By similarity.

Gene ID:

TBX1

Uniprot

O43435

Synonyms:

CAFS; CTHM; DGCR; DGS; DORV

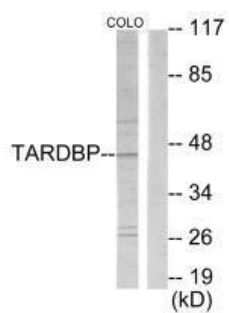
Immunogen:

Synthesized peptide derived from C-terminal of human TBX1.

Storage:

Rabbit IgG in phosphate buffered saline (without Mg²⁺ and Ca²⁺), pH 7.4, 150mM NaCl, 0.02% sodium azide and 50% glycerol.

Product Images



Western blot analysis of extracts from COLO205 cells, using TBX1 antibody.

Immunofluorescence analysis of A549 cells, using TBX1 antibody.

