

PACO23175

---

## Product Information

**Size:**

100ul

**Reactivity:**

Human, Mouse

**Source:**

Rabbit

**Isotype:**

IgG

**Applications:**

ELISA, WB, IHC

**Recommended dilutions:**

ELISA:1:2000-1:10000, WB:1:500-1:3000,  
IHC:1:50-1:100

**Protein Background:**

Receptor-proximal protein kinase regulating integrin-mediated signal transduction. May act as a mediator of inside-out integrin signaling. Focal adhesion protein part of the complex ILK-PINCH. This complex is considered to be one of the convergence points of integrin- and growth factor-signaling pathway. Could be implicated in mediating cell architecture, adhesion to integrin substrates and anchorage-dependent growth in epithelial cells. Phosphorylates beta-1 and beta-3 integrin subunit on serine and threonine residues, but also AKT1 and GSK3B.

**Gene ID:**

ILK

**Uniprot**

Q13418

**Synonyms:**

59 kDa serine/threonine protein kinase; EC 2.7.11.1; ILK-1; ILK1; Integrin-linked protein kinase

**Immunogen:**

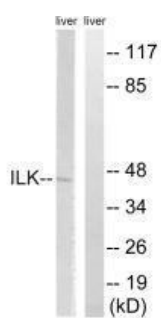
Synthesized non-phosphopeptide derived from human ILK around the phosphorylation site of serine 246 (I-F-S(p)-H-P).

**Storage:**

Rabbit IgG in phosphate buffered saline (without Mg<sup>2+</sup> and Ca<sup>2+</sup>), pH 7.4, 150mM NaCl, 0.02% sodium azide and 50% glycerol.

## Product Images

---



Western blot analysis of extracts from rat liver cells, using ILK (Ab-246) antibody.

Immunohistochemistry analysis of paraffin-embedded human brain tissue using ILK (Ab-246) antibody.

