

# ZRANB2 Antibody



PACO23180

---

## Product Information

**Size:**

100ul

**Reactivity:**

Human, Mouse, Rat

**Source:**

Rabbit

**Isotype:**

IgG

**Applications:**

ELISA, WB, IF

**Recommended dilutions:**

ELISA:1:2000-1:10000, WB:1:500-1:3000,  
IF:1:100-1:500

**Protein Background:**

Splice factor required for alternative splicing of TRA2B/SFRS10 transcripts. May interfere with constitutive 5'-splice site selection.

**Gene ID:**

ZRANB2

**Uniprot**

O95218

**Synonyms:**

Z265; ZIS; ZN265; Zinc finger protein 265; Zinc finger

**Immunogen:**

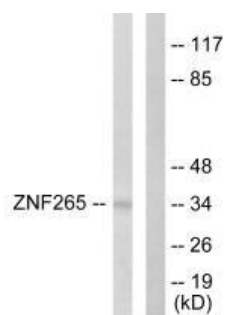
Synthesized peptide derived from internal of human ZNF265.

**Storage:**

Rabbit IgG in phosphate buffered saline (without Mg<sup>2+</sup> and Ca<sup>2+</sup>), pH 7.4, 150mM NaCl, 0.02% sodium azide and 50% glycerol.

## Product Images

---



Western blot analysis of extracts from HeLa cells, using ZNF265 antibody.

Immunofluorescence analysis of HUVEC cells, using ZNF265 antibody.

