

SIX6 Antibody



PACO23182

Product Information

Size:

100ul

Reactivity:

Human, Mouse, Rat

Source:

Rabbit

Isotype:

IgG

Applications:

ELISA, WB, IF

Recommended dilutions:

ELISA:1:2000-1:10000, WB:1:500-1:3000,
IF:1:100-1:500

Protein Background:

May be involved in eye development.

Gene ID:

SIX6

Uniprot

O95475

Synonyms:

Homeobox protein SIX6; Sine oculis homeobox homolog 6; Optic homeobox 2;
Homeodomain protein OPTX2; SIX6

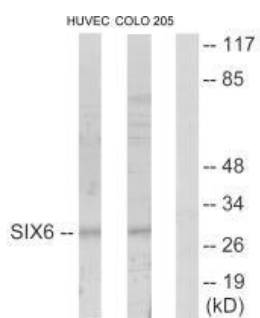
Immunogen:

Synthesized peptide derived from internal of human SIX6.

Storage:

Rabbit IgG in phosphate buffered saline (without Mg²⁺ and Ca²⁺), pH 7.4, 150mM NaCl, 0.02% sodium azide and 50% glycerol.

Product Images



Western blot analysis of extracts from HUVEC cells and COLO205 cells, using SIX6 antibody.

Immunofluorescence analysis of HepG2 cells, using SIX6 antibody.

