

PACO23184

Product Information

Size:

100ul

Reactivity:

Human

Source:

Rabbit

Isotype:

IgG

Applications:

ELISA, WB, IHC

Recommended dilutions:

ELISA:1:2000-1:10000, WB:1:500-1:3000,
IHC:1:50-1:100

Protein Background:

Component of heterochromatin that recognizes and binds histone H3 tails methylated at 'Lys-9' (H3K9me), leading to epigenetic repression. In contrast, it is excluded from chromatin when 'Tyr-41' of histone H3 is phosphorylated (H3Y41ph). Can interact with lamin-B receptor (LBR). This interaction can contribute to the association of the heterochromatin with the inner nuclear membrane. Involved in the formation of functional kinetochore through interaction with MIS12 complex proteins.

Gene ID:

CBX5

Uniprot

P45973

Synonyms:

antigen p25; chromobox protein homolog 5; heterochromatin protein 1 alpha; HP1 alpha; HP1A

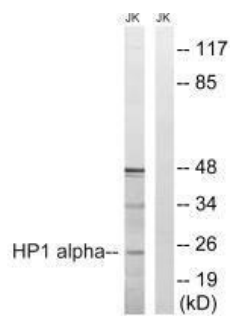
Immunogen:

Synthesized non-phosphopeptide derived from human HP1 alpha around the phosphorylation site of serine 92 (R-K-S(p)-N-F).

Storage:

Rabbit IgG in phosphate buffered saline (without Mg²⁺ and Ca²⁺), pH 7.4, 150mM NaCl, 0.02% sodium azide and 50% glycerol.

Product Images



Western blot analysis of extracts from Jurkat cells, treated with insulin (0.01U/ml, 15mins), using HP1 alpha (Ab-92) antibody.

Immunohistochemistry analysis of paraffin-embedded human brain tissue using HP1 alpha (Ab-92) antibody.

