

# RPS6KB1 Antibody



PACO23209

---

## Product Information

**Size:**

100ul

**Reactivity:**

Human, Mouse, Rat

**Source:**

Rabbit

**Isotype:**

IgG

**Applications:**

ELISA, WB, IHC

**Recommended dilutions:**

ELISA:1:2000-1:10000, WB:1:500-1:3000,  
IHC:1:50-1:100

**Protein Background:**

**Gene ID:**

RPS6KB1

**Uniprot**

P23443

**Synonyms:**

EC 2.7.11.1; KS6B1; P70-S6K; RPS6KB1; Ribosomal protein S6 kinase

**Immunogen:**

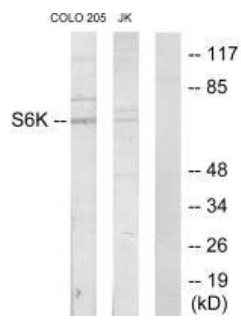
Synthesized peptide derived from internal of human S6K.

**Storage:**

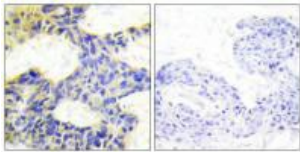
Rabbit IgG in phosphate buffered saline (without Mg<sup>2+</sup> and Ca<sup>2+</sup>), pH 7.4, 150mM NaCl, 0.02% sodium azide and 50% glycerol.

## Product Images

---



Western blot analysis of extracts from COLO205 cells and Jurkat cells, using S6K antibody.



Immunohistochemistry analysis of paraffin-embedded human breast carcinoma tissue using S6K antibody.