

ELAVL2/ELAVL4 Antibody



PACO23213

Product Information

Size:

100ul

Reactivity:

Human, Mouse, Rat

Source:

Rabbit

Isotype:

IgG

Applications:

ELISA, WB, IF

Recommended dilutions:

ELISA:1:2000-1:10000, WB:1:500-1:3000,
IF:1:100-1:500

Protein Background:

Binds RNA. Seems to recognize a GAAA motif. Can bind to its own 3'-UTR, the FOS 3'-UTR and the ID 3'-UTR.

Gene ID:

ELAVL2/ELAVL4

Uniprot

Q12926/P26378

Synonyms:

ELAV-like protein 4; Paraneoplastic encephalomyelitis antigen HuD; Hu-antigen D; ELAVL4; HUD

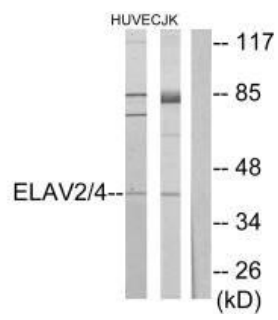
Immunogen:

Synthesized peptide derived from internal of human ELAV2/4.

Storage:

Rabbit IgG in phosphate buffered saline (without Mg²⁺ and Ca²⁺), pH 7.4, 150mM NaCl, 0.02% sodium azide and 50% glycerol.

Product Images



Western blot analysis of extracts from HUVEC cells and Jurkat cells, using ELAV2/4 antibody.

Immunofluorescence analysis of HepG2 cells, using ELAV2/4 antibody.

