

PACO23236

---

## Product Information

**Size:**

100ul

**Reactivity:**

Human, Mouse

**Source:**

Rabbit

**Isotype:**

IgG

**Applications:**

ELISA, WB, IF

**Recommended dilutions:**

ELISA:1:2000-1:10000, WB:1:500-1:3000,  
IF:1:100-1:500

**Protein Background:**

Probable serine protease that play a role in hearing. Acts as a permissive factor for cochlear hair cells survival and activation at the onset of hearing and is required for saccular hair cell survival By similarity. Activates ENaC (in vitro).

**Gene ID:**

TMPRSS3

**Uniprot**

P57727

**Synonyms:**

Transmembrane protease; serine 3; EC 3.4.21. -; Serine protease TADG-12; Tumor-associated differentially-expressed gene 12 protein

**Immunogen:**

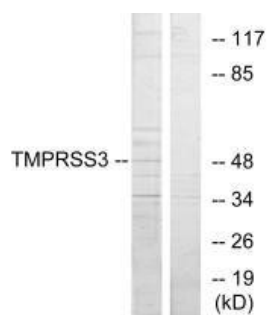
Synthesized peptide derived from C-terminal of human TMPRSS3.

**Storage:**

Rabbit IgG in phosphate buffered saline (without Mg<sup>2+</sup> and Ca<sup>2+</sup>), pH 7.4, 150mM NaCl, 0.02% sodium azide and 50% glycerol.

## Product Images

---



Western blot analysis of extracts from HUVEC cells, using TMPRSS3 antibody.

Immunofluorescence analysis of HeLa cells, using TMPRSS3 antibody.

