

PACO23240

---

## Product Information

**Size:**

100ul

**Reactivity:**

Human

**Source:**

Rabbit

**Isotype:**

IgG

**Applications:**

ELISA, IHC, IF

**Recommended dilutions:**

ELISA:1:2000-1:10000, IHC:1:50-1:100,  
IF:1:100-1:500

**Protein Background:**

Intracellular transport of retinol.

**Gene ID:**

RBP5

**Uniprot**

P82980

**Synonyms:**

Retinol-binding protein III; cellular; CRBP-III; HRBPiso; RBP5

**Immunogen:**

Synthesized peptide derived from internal of human CRBP III.

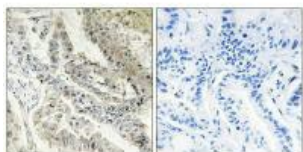
**Storage:**

Rabbit IgG in phosphate buffered saline (without Mg<sup>2+</sup> and Ca<sup>2+</sup>), pH 7.4, 150mM NaCl, 0.02% sodium azide and 50% glycerol.

## Product Images

---

Immunohistochemistry analysis of paraffin-embedded human lung carcinoma tissue, using CRBP III antibody.



Immunofluorescence analysis of LOVO cells, using CRBP III antibody.

