

PACO23254

Product Information

Size:

100ul

Reactivity:

Human

Source:

Rabbit

Isotype:

IgG

Applications:

ELISA, IHC, IF

Recommended dilutions:

ELISA:1:2000-1:10000, IHC:1:50-1:100,
IF:1:100-1:500

Protein Background:

Phosphorylates diacylglycerol (DAG) to generate phosphatidic acid (PA).

Gene ID:

DGKK

Uniprot

Q5KSL6

Synonyms:

EC 2.7.1.107; Diglyceride kinase kappa; DGK-kappa; DAG kinase kappa; 142 kDa diacylglycerol kinase

Immunogen:

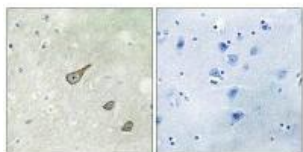
Synthesized peptide derived from C-terminal of human DGKK.

Storage:

Rabbit IgG in phosphate buffered saline (without Mg²⁺ and Ca²⁺), pH 7.4, 150mM NaCl, 0.02% sodium azide and 50% glycerol.

Product Images

Immunohistochemistry analysis of paraffin-embedded human brain tissue, using DGKK antibody.



Immunofluorescence analysis of COS-7 cells, using DGKK antibody.

