

PACO23256

Product Information

Size:

100ul

Reactivity:

Human, Mouse

Source:

Rabbit

Isotype:

IgG

Applications:

ELISA, WB, IF

Recommended dilutions:

ELISA:1:2000-1:10000, WB:1:500-1:3000,
IF:1:100-1:500

Protein Background:

DOK proteins are enzymatically inert adaptor or scaffolding proteins. They provide a docking platform for the assembly of multimolecular signaling complexes. DOK6 promotes Ret-mediated neurite growth. May have a role in brain development and/or maintenance.

Gene ID:

DOK6

Uniprot

Q6PKX4

Synonyms:

Downstream of tyrosine kinase 6; Docking protein 6; DOK6; DOK5L;

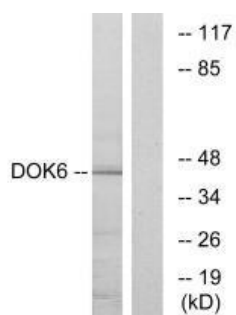
Immunogen:

Synthesized peptide derived from internal of human DOK6.

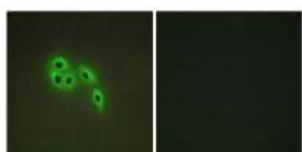
Storage:

Rabbit IgG in phosphate buffered saline (without Mg²⁺ and Ca²⁺), pH 7.4, 150mM NaCl, 0.02% sodium azide and 50% glycerol.

Product Images



Western blot analysis of extracts from COLO cells, using DOK6 antibody.



Immunofluorescence analysis of A549 cells, using DOK6 antibody.