

# ARMCX2 Antibody



PACO23259

---

## Product Information

**Size:**

100ul

**Reactivity:**

Human, Mouse, Rat

**Source:**

Rabbit

**Isotype:**

IgG

**Applications:**

ELISA, WB, IF

**Recommended dilutions:**

ELISA:1:2000-1:10000, WB:1:500-1:3000,  
IF:1:100-1:500

**Protein Background:**

This gene encodes a protein containing a potential N-terminal transmembrane domain and multiple armadillo (arm) repeats. Proteins containing arm repeats are involved in development, maintenance of tissue integrity, and tumorigenesis. This gene is located in a cluster of related genes on chromosome X. There is a pseudogene for this gene on chromosome 7. Alternative splicing in the 5' UTR results in multiple transcript variants encoding the same protein.

**Gene ID:**

ARMCX2

**Uniprot**

Q7L311

**Synonyms:**

Armadillo repeat-containing X-linked protein 2; Protein ALEX2; ARM protein lost in epithelial cancers on chromosome X 2; ARMCX2; ALEX2

**Immunogen:**

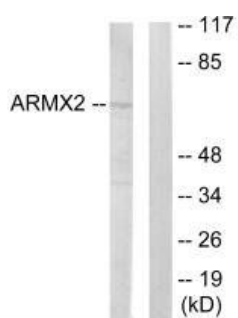
Synthesized peptide derived from internal of human ARMX2.

**Storage:**

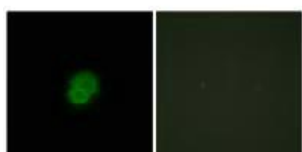
Rabbit IgG in phosphate buffered saline (without Mg<sup>2+</sup> and Ca<sup>2+</sup>), pH 7.4, 150mM NaCl, 0.02% sodium azide and 50% glycerol.

## Product Images

---



Western blot analysis of extracts from 293 cells, using ARMX2 antibody.



Immunofluorescence analysis of HepG2 cells, using ARMX2 antibody.