

Product Information

Size:

100ul

Reactivity:

Human, Mouse

Source:

Rabbit

Isotype:

IgG

Applications:

ELISA, IHC, IF

Recommended dilutions:

ELISA:1:2000-1:10000, IHC:1:50-1:100,
IF:1:100-1:500

Protein Background:

Dual regulator of transcription and autophagy. Positively regulates autophagy and is required for autophagosome formation and processing. May act as a scaffold protein that recruits MAP1LC3A, GABARAP and GABARAPL2 and brings them to the autophagosome membrane by interacting with VMP1 where, in cooperation with the BECN1-PI3-kinase class III complex, they trigger autophagosome development. Acts as a transcriptional activator of THRA.

Gene ID:

Tp53inp2

Uniprot

Q8CFU8

Synonyms:

p53-inducible protein U; PIG-U; PINH; T53I2; tumor protein p53 inducible nuclear protein 2

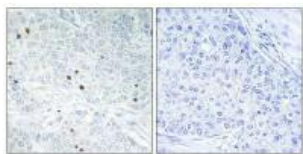
Immunogen:

Synthesized peptide derived from internal of human TP53INP2.

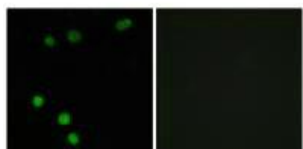
Storage:

Rabbit IgG in phosphate buffered saline (without Mg²⁺ and Ca²⁺), pH 7.4, 150mM NaCl, 0.02% sodium azide and 50% glycerol.

Product Images



Immunohistochemistry analysis of paraffin-embedded human breast carcinoma tissue, using TP53INP2 antibody.



Immunofluorescence analysis of MCF-7 cells, using TP53INP2 antibody.