

# CSNK1A1L/CSNK1A1 Antibody



PACO23264

---

## Product Information

**Size:**

100ul

**Reactivity:**

Human, Mouse

**Source:**

Rabbit

**Isotype:**

IgG

**Applications:**

ELISA, IHC, IF

**Recommended dilutions:**

ELISA:1:2000-1:10000, IHC:1:50-1:100,  
IF:1:100-1:500

**Protein Background:**

Casein kinases are operationally defined by their preferential utilization of acidic proteins such as caseins as substrates. It can phosphorylate a large number of proteins. Participates in Wnt signaling By similarity.

**Gene ID:**

CSNK1A1L/CSNK1A1

**Uniprot**

Q8N752/P48729

**Synonyms:**

CK1; CK1-alpha2; CKI-alpha; CSNK1A1L; EC 2.7.11.1

**Immunogen:**

Synthesized peptide derived from internal of human CKI- alpha 1/L.

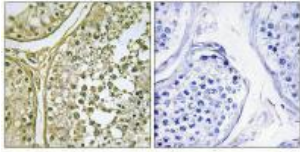
**Storage:**

Rabbit IgG in phosphate buffered saline (without Mg<sup>2+</sup> and Ca<sup>2+</sup>), pH 7.4, 150mM NaCl, 0.02% sodium azide and 50% glycerol.

## Product Images

---

Immunohistochemistry analysis of paraffin-embedded human testis tissue, using CKI-alpha 1/L antibody.



Immunofluorescence analysis of A549 cells, using CKI- alpha 1/L antibody.

