

# ARID1B Antibody



PACO23267

---

## Product Information

**Size:**

100ul

**Reactivity:**

Human, Rat

**Source:**

Rabbit

**Isotype:**

IgG

**Applications:**

ELISA, WB, IF

**Recommended dilutions:**

ELISA:1:2000-1:10000, WB:1:500-1:3000,  
IF:1:100-1:500

**Protein Background:****Gene ID:**

ARID1B

**Uniprot**

Q8NFD5

**Synonyms:**

ARID domain-containing protein 1B; Osa homolog 2; hOsa2; p250R; BRG1-binding protein hELD/OSA1

**Immunogen:**

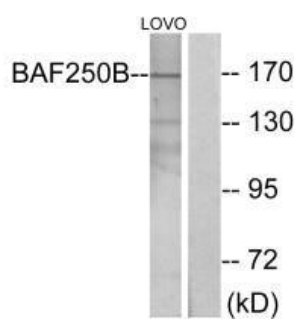
Synthesized peptide derived from interal of human BAF250B.

**Storage:**

Rabbit IgG in phosphate buffered saline (without Mg<sup>2+</sup> and Ca<sup>2+</sup>), pH 7.4, 150mM NaCl, 0.02% sodium azide and 50% glycerol.

## Product Images

---



Western blot analysis of extracts from LOVO cells, using BAF250B antibody.

Immunofluorescence analysis of HUVEC cells, using BAF250B antibody.

