

PACO23268

Product Information

Size:

100ul

Reactivity:

Human, Mouse

Source:

Rabbit

Isotype:

IgG

Applications:

ELISA, IHC, IF

Recommended dilutions:

ELISA:1:2000-1:10000, IHC:1:50-1:100,
IF:1:100-1:500

Protein Background:

Metalloreductase that has the ability to reduce both Fe³⁺ to Fe²⁺ and Cu²⁺ to Cu¹⁺.
Uses NAD⁺ as acceptor By similarity.

Gene ID:

STEAP2

Uniprot

Q8NFT2

Synonyms:

EC 1.16.1. -; Six-transmembrane epithelial antigen of prostate 2; SixTransMembrane
protein of prostate 1; Prostate cancer-associated protein 1;

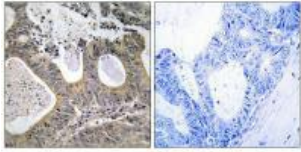
Immunogen:

Synthesized peptide derived from C-terminal of human STEA2.

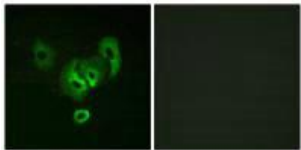
Storage:

Rabbit IgG in phosphate buffered saline (without Mg²⁺ and Ca²⁺), pH 7.4, 150mM
NaCl, 0.02% sodium azide and 50% glycerol.

Product Images



Immunohistochemistry analysis of paraffin-embedded human colon carcinoma tissue, using STEA2 antibody.



Immunofluorescence analysis of A549 cells, using STEA2 antibody.