

# EPS8L1 Antibody



PACO23270

---

## Product Information

**Size:**

100ul

**Reactivity:**

Human, Mouse

**Source:**

Rabbit

**Isotype:**

IgG

**Applications:**

ELISA, WB, IHC

**Recommended dilutions:**

ELISA:1:2000-1:10000, WB:1:500-1:3000,  
IHC:1:50-1:100

**Protein Background:**

Stimulates guanine exchange activity of SOS1. May play a role in membrane ruffling and remodeling of the actin cytoskeleton.

**Gene ID:**

EPS8L1

**Uniprot**

Q8TE68

**Synonyms:**

Epidermal growth factor receptor kinase substrate 8-like protein 1; Epidermal growth factor receptor pathway substrate 8-related protein 1; EPS8-like protein 1; EPS8L1; DRC3

**Immunogen:**

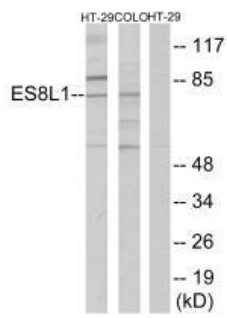
Synthesized peptide derived from internal of human ES8L1.

**Storage:**

Rabbit IgG in phosphate buffered saline (without Mg<sup>2+</sup> and Ca<sup>2+</sup>), pH 7.4, 150mM NaCl, 0.02% sodium azide and 50% glycerol.

## Product Images

---



Western blot analysis of extracts from COLO205 cells, using ES8L1 antibody.

Immunohistochemistry analysis of paraffin-embedded human colon carcinoma tissue using ES8L1 antibody.

