

BRI3BP Antibody



PACO23273

Product Information

Size:

100ul

Reactivity:

Human, Mouse

Source:

Rabbit

Isotype:

IgG

Applications:

ELISA, WB, IHC

Recommended dilutions:

ELISA:1:2000-1:10000, WB:1:500-1:3000,
IHC:1:50-1:100

Protein Background:

Involved in tumorigenesis and may function by stabilizing p53/TP53.

Gene ID:

BRI3BP

Uniprot

Q8WY22

Synonyms:

BRI3-binding protein; I3-binding protein; Cervical cancer 1 proto-oncogene-binding protein KG19; HCCR-1; BRI3BP

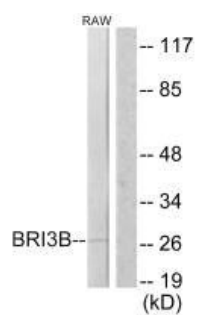
Immunogen:

Synthesized peptide derived from internal of human BRI3B.

Storage:

Rabbit IgG in phosphate buffered saline (without Mg²⁺ and Ca²⁺), pH 7.4, 150mM NaCl, 0.02% sodium azide and 50% glycerol.

Product Images



Western blot analysis of extracts from RAW264.7 cells, using BRI3B antibody.

Immunohistochemistry analysis of paraffin-embedded human brain tissue using BRI3B antibody.

