

---

## Product Information

**Size:**

100ul

**Reactivity:**

Human, Mouse

**Source:**

Rabbit

**Isotype:**

IgG

**Applications:**

ELISA, IHC, IF

**Recommended dilutions:**

ELISA:1:2000-1:10000, IHC:1:50-1:100,  
IF:1:100-1:500

**Protein Background:**

Functions as a GTPase-activating protein for the small GTPases RHOA, RHOB, RHOC and CDC42, terminating their downstream signaling. This induces morphological changes and detachment through cytoskeletal reorganization, playing a critical role in biological processes such as cell migration and proliferation. Also functions in vivo as an activator of the phospholipase PLCD1. Active DLC1 increases cell migration velocity but reduces directionality.

**Gene ID:**

DLC1

**Uniprot**

Q96QB1

**Synonyms:**

Rho-type GTPase-activating protein 7; Deleted in liver cancer 1 protein; Dlc-1; HP protein; StAR-related lipid transfer protein 12

**Immunogen:**

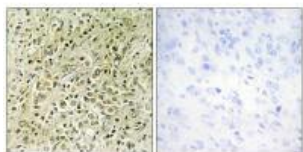
Synthesized peptide derived from internal of human RHG07.

**Storage:**

Rabbit IgG in phosphate buffered saline (without Mg<sup>2+</sup> and Ca<sup>2+</sup>), pH 7.4, 150mM NaCl, 0.02% sodium azide and 50% glycerol.

## Product Images

---



Immunohistochemistry analysis of paraffin-embedded human prostate carcinoma tissue, using RHG07 antibody.



Immunofluorescence analysis of A549 cells, using RHG07 antibody.