

# C2orf40 Antibody



PACO23282

---

## Product Information

**Size:**

100ul

**Reactivity:**

Human, Mouse

**Source:**

Rabbit

**Isotype:**

IgG

**Applications:**

ELISA, IHC, IF

**Recommended dilutions:**

ELISA:1:2000-1:10000, IHC:1:50-1:100,  
IF:1:100-1:500

**Protein Background:**

Probable hormone that may induce senescence of oligodendrocyte and neural precursor cells, characterized by G1 arrest, RB1 dephosphorylation and accelerated CCND1 and CCND3 proteasomal degradation By similarity.

**Gene ID:**

C2orf40

**Uniprot**

Q9H1Z8

**Synonyms:**

Esophageal cancer-related gene 4 protein [Precursor]; C2orf40; ECRG4;  
UNQ761/PRO1508;

**Immunogen:**

Synthesized peptide derived from internal of human ECRG4.

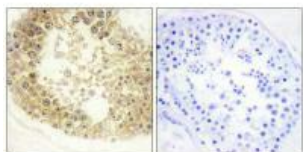
**Storage:**

Rabbit IgG in phosphate buffered saline (without Mg<sup>2+</sup> and Ca<sup>2+</sup>), pH 7.4, 150mM NaCl, 0.02% sodium azide and 50% glycerol.

## Product Images

---

Immunohistochemistry analysis of paraffin-embedded human testis tissue, using ECRG4 antibody.



Immunofluorescence analysis of A549 cells, using ECRG4 antibody.

