

Product Information

Size:

100ul

Reactivity:

Human, Mouse

Source:

Rabbit

Isotype:

IgG

Applications:

ELISA, WB, IHC

Recommended dilutions:

ELISA:1:2000-1:10000, WB:1:500-1:3000,
IHC:1:50-1:100

Protein Background:

May be either a bona fide (dihydro)ceramide synthase or a modulator of its activity. When overexpressed in cells is involved in the production of sphingolipids containing different fatty acid donors (N-linked stearyl- (C18) or arachidoyl- (C20) ceramides) in a fumonisins B1-independent manner. By similarity.

Gene ID:

CERS4

Uniprot

Q9HA82

Synonyms:

LAG1 longevity assurance homolog 4; LASS4;

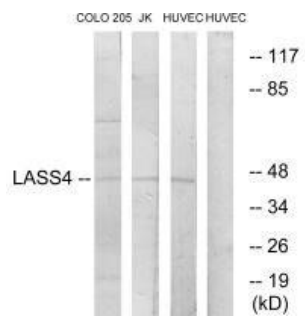
Immunogen:

Synthesized peptide derived from internal of human LASS4.

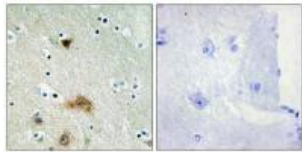
Storage:

Rabbit IgG in phosphate buffered saline (without Mg²⁺ and Ca²⁺), pH 7.4, 150mM NaCl, 0.02% sodium azide and 50% glycerol.

Product Images



Western blot analysis of extracts from COLO cells, Jurkat cells and HUVEC cells, using LASS4 antibody.



Immunohistochemistry analysis of paraffin-embedded human brain tissue using LASS4 antibody.