

ZNF287 Antibody



PACO23284

Product Information

Size:

100ul

Reactivity:

Human

Source:

Rabbit

Isotype:

IgG

Applications:

ELISA, WB, IHC

Recommended dilutions:

ELISA:1:2000-1:10000, WB:1:500-1:3000,
IHC:1:50-1:100

Protein Background:

May be involved in transcriptional regulation.

Gene ID:

ZNF287

Uniprot

Q9HBT7

Synonyms:

Zinc finger protein with KRAB and SCAN domains 13; Zinc finger protein 287; ZNF287;
ZKSCAN13;

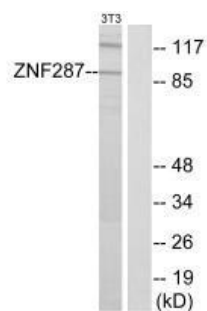
Immunogen:

Synthesized peptide derived from internal of human ZNF287.

Storage:

Rabbit IgG in phosphate buffered saline (without Mg²⁺ and Ca²⁺), pH 7.4, 150mM
NaCl, 0.02% sodium azide and 50% glycerol.

Product Images



Western blot analysis of extracts from NIH-3T3 cells, using ZNF287 antibody.

Immunohistochemistry analysis of paraffin-embedded human brain tissue using ZNF287 antibody.

