

PACO23286

Product Information

Size:

100ul

Reactivity:

Human, Mouse

Source:

Rabbit

Isotype:

IgG

Applications:

ELISA, WB, IF

Recommended dilutions:

ELISA:1:2000-1:10000, WB:1:500-1:3000,
IF:1:100-1:500

Protein Background:

Strongly activates transcription when bound to HCFC1. Suppresses the expression of HSV proteins in cells infected with the virus in a HCFC1-dependent manner. Also suppresses the HCFC1-dependent transcriptional activation by CREB3 and reduces the amount of CREB3 in the cell. Able to down-regulate expression of some cellular genes in CREBZF-expressing cells.

Gene ID:

CREBZF

Uniprot

Q9NS37

Synonyms:

CREB/ATF bZIP transcription factor; Host cell factor-binding transcription factor Zhangfei; HCF-binding transcription factor Zhangfei; CREBZF; ZF

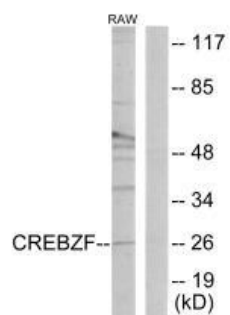
Immunogen:

Synthesized peptide derived from internal of human CREBZF.

Storage:

Rabbit IgG in phosphate buffered saline (without Mg²⁺ and Ca²⁺), pH 7.4, 150mM NaCl, 0.02% sodium azide and 50% glycerol.

Product Images



Western blot analysis of extracts from RAW264.7 cells, using CREBZF antibody.

Immunofluorescence analysis of HepG2 cells, using CREBZF antibody.

