

Product Information

Size:

100ul

Reactivity:

Human

Source:

Rabbit

Isotype:

IgG

Applications:

ELISA, WB, IHC

Recommended dilutions:

ELISA:1:2000-1:10000, WB:1:500-1:3000,
IHC:1:50-1:100

Protein Background:

Constitutively active serine/threonine-protein kinase that exhibits growth-factor-independent kinase activity and that may participate in p53/TP53-dependent cell growth arrest signaling and play an inhibitory role during embryogenesis.

Gene ID:

RPS6KA6

Uniprot

Q9UK32

Synonyms:

90 kDa ribosomal protein S6 kinase 6; EC 2.7.1.37; EC 2.7.11.1; KS6A6; RPS6KA6

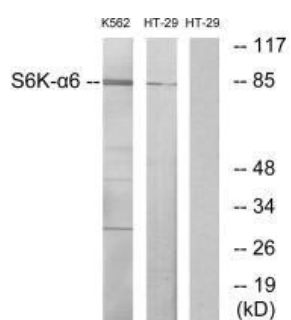
Immunogen:

Synthesized peptide derived from internal of human S6K- alpha 6.

Storage:

Rabbit IgG in phosphate buffered saline (without Mg²⁺ and Ca²⁺), pH 7.4, 150mM NaCl, 0.02% sodium azide and 50% glycerol.

Product Images



Western blot analysis of extracts from K562 cells and HT-29 cells, using S6K- α 6 antibody.

Immunohistochemistry analysis of paraffin-embedded human brain tissue using S6K- α 6 antibody.

