

PACO23300

Product Information

Size:

100ul

Reactivity:

Human, Mouse, Rat

Source:

Rabbit

Isotype:

IgG

Applications:

ELISA, WB, IHC

Recommended dilutions:

ELISA:1:2000-1:10000, WB:1:500-1:3000,
IHC:1:50-1:100

Protein Background:

Serine/threonine-protein kinase which is an important downstream effector of CDC42 and plays a role in the regulation of cytoskeleton reorganization and cell migration. Regulates actin cytoskeletal reorganization via phosphorylation of PPP1R12C and MYL9/MLC2. In concert with MYO18A and LURAP1, is involved in modulating lamellar actomyosin retrograde flow that is crucial to cell protrusion and migration. Phosphorylates PPP1R12A.

Gene ID:

CDC42BPB

Uniprot

Q9Y5S2

Synonyms:

CDC42-binding protein kinase beta; CDC42BPB; EC 2.7.11.1; MRCK-beta;

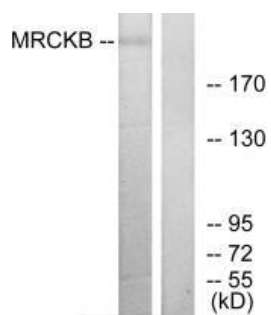
Immunogen:

Synthesized peptide derived from internal of human MRCKB.

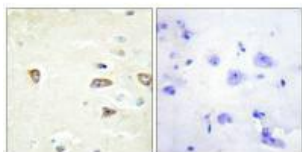
Storage:

Rabbit IgG in phosphate buffered saline (without Mg²⁺ and Ca²⁺), pH 7.4, 150mM NaCl, 0.02% sodium azide and 50% glycerol.

Product Images



Western blot analysis of extracts from COLO cells, using MRCKB antibody.



Immunohistochemistry analysis of paraffin-embedded human brain tissue using MRCKB antibody.