

### Product Information

**Size:**

100ul

**Reactivity:**

Human

**Source:**

Rabbit

**Isotype:**

IgG

**Applications:**

ELISA, WB, IF

**Recommended dilutions:**

ELISA:1:2000-1:10000, WB:1:500-1:3000,  
IF:1:100-1:500

**Protein Background:**

Interacts with RB1 and EP300 and acts as a repressor of MYOD1 transactivation. Inhibits EP300 and CBP histone acetyltransferase activity. May be involved in coupling cell cycle exit to the transcriptional activation of genes required for cellular differentiation. May act as a candidate coinhibitory factor for NR0B2 that can be directly linked to transcription inhibitory mechanisms. UniProtKB Q9DCR4.

**Gene ID:**

EID1

**Uniprot**

Q9Y6B2

**Synonyms:**

EP300-interacting inhibitor of differentiation 1; EID-1; E1A-like inhibitor of differentiation 1; CREBBP/EP300 inhibitory protein 1; 21 kDa pRb-associated protein

**Immunogen:**

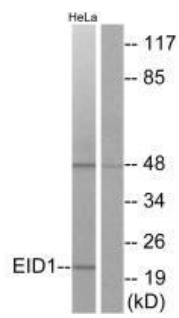
Synthesized peptide derived from internal of human EID1.

**Storage:**

Rabbit IgG in phosphate buffered saline (without Mg<sup>2+</sup> and Ca<sup>2+</sup>), pH 7.4, 150mM NaCl, 0.02% sodium azide and 50% glycerol.

## Product Images

---



Western blot analysis of extracts from HeLa cells, using EID1 antibody.

Immunofluorescence analysis of A549 cells, using EID1 antibody.

