

PACO23302

Product Information

Size:

100ul

Reactivity:

Human, Mouse, Rat

Source:

Rabbit

Isotype:

IgG

Applications:

ELISA, WB, IF

Recommended dilutions:

ELISA:1:2000-1:10000, WB:1:500-1:3000,
IF:1:100-1:500

Protein Background:

Adapter protein implicated in the regulation of a large spectrum of both general and specialized signaling pathways. Binds to a large number of partners, usually by recognition of a phosphoserine or phosphothreonine motif. Binding generally results in the modulation of the activity of the binding partner. Negatively regulates the kinase activity of PDPK1.

Gene ID:

YWHAH

Uniprot

Q04917

Synonyms:

14-3-3 protein eta; Protein AS1; YWHAH; YWHA1;

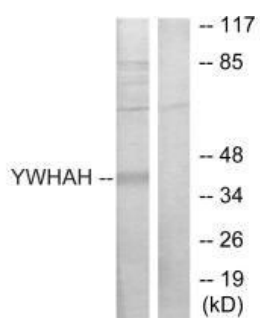
Immunogen:

Synthesized peptide derived from internal of human 14-3-3 eta.

Storage:

Rabbit IgG in phosphate buffered saline (without Mg²⁺ and Ca²⁺), pH 7.4, 150mM NaCl, 0.02% sodium azide and 50% glycerol.

Product Images



Western blot analysis of extracts from Jurkat cells, using 14-3-3 eta antibody.

Immunofluorescence analysis of HeLa cells, using 14-3-3 eta antibody.

