

# ADCY6/ADCY5 Antibody



PACO23304

---

## Product Information

**Size:**

100ul

**Reactivity:**

Human, Mouse

**Source:**

Rabbit

**Isotype:**

IgG

**Applications:**

ELISA, IHC, IF

**Recommended dilutions:**

ELISA:1:2000-1:10000, IHC:1:50-1:100,  
IF:1:100-1:500

**Protein Background:**

Membrane-bound, calcium-inhibitable adenylyl cyclase By similarity.

**Gene ID:**

ADCY6/ADCY5

**Uniprot**

O43306/O95622

**Synonyms:**

ATP pyrophosphate-lyase; CYA6; Ca(2<sup>-</sup>)-inhibitable adenylyl cyclase; EC 4.6.1.1;  
KIAA0422

**Immunogen:**

Synthesized peptide derived from internal of human ADCY5/6.

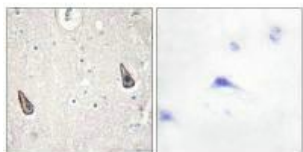
**Storage:**

Rabbit IgG in phosphate buffered saline (without Mg<sup>2+</sup> and Ca<sup>2+</sup>), pH 7.4, 150mM  
NaCl, 0.02% sodium azide and 50% glycerol.

## Product Images

---

Immunohistochemistry analysis of paraffin-embedded human brain tissue using ADCY5/6 antibody.



Immunofluorescence analysis of HeLa cells, using ADCY5/6 antibody.

